



Turnstile Foundation Frame

The foundation frame is required for turnstiles to be mounted on an uneven surface, for example in case of pavers. A level concrete mounting surface is required for correct mounting of the foundation frame. It should be approx. 150 mm below the finished surface.

The foundation frame must be positioned in its desired location taking care on which side (right or left), you want to install the equipment later. (See Fig 5.1 and 5.2)

Installation of the foundation frame:

- First of all put the frame in place
- Drill the fixing holes
- Insert the fixing screws
- Install the foundation frame by means of jackscrews in water (if needed, even out with suitable underlayment)
- Then fix the foundation frame
- Pay attention to correct cable guiding to the turnstile
- Empty conduits must not be squeezed
- Please consider the cure time of the chemical anchor studs

With the installed foundation frame, the mounting of the turnstile can be carried out in the same way as on a concrete foundation.

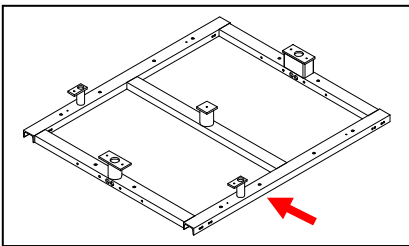


Fig. 5.1 Entry Left version

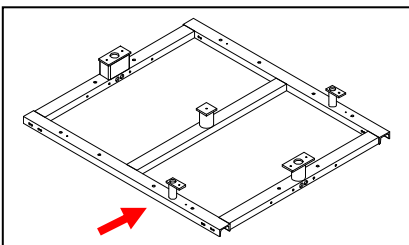


Fig. 5.2 Entry Right version

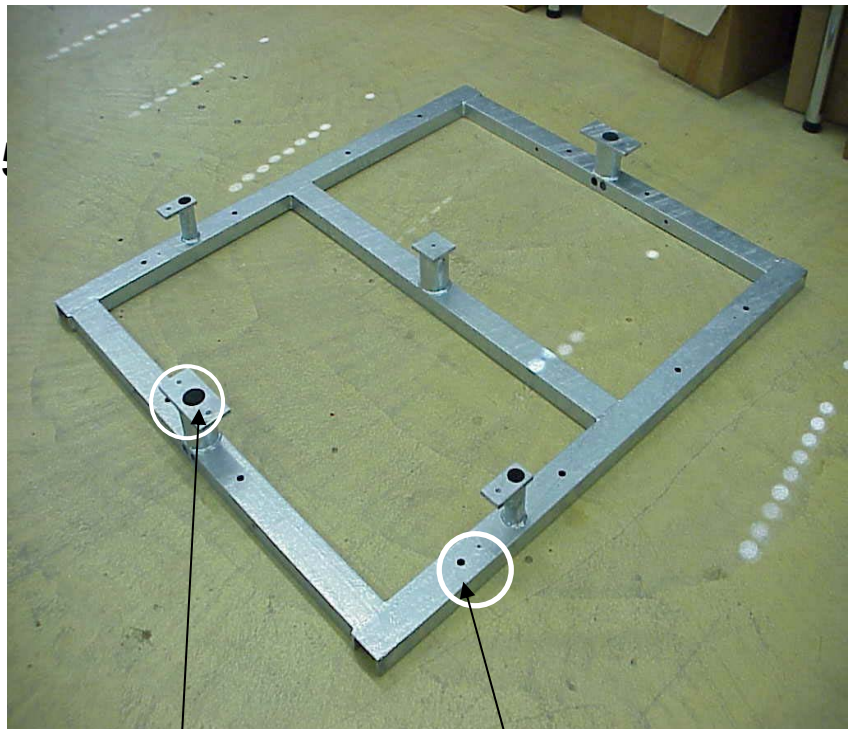


Fig.5

Cable routing from foundation into turnstile

Jackscrews
 For positioning the foundation frame on the concrete, if necessary.