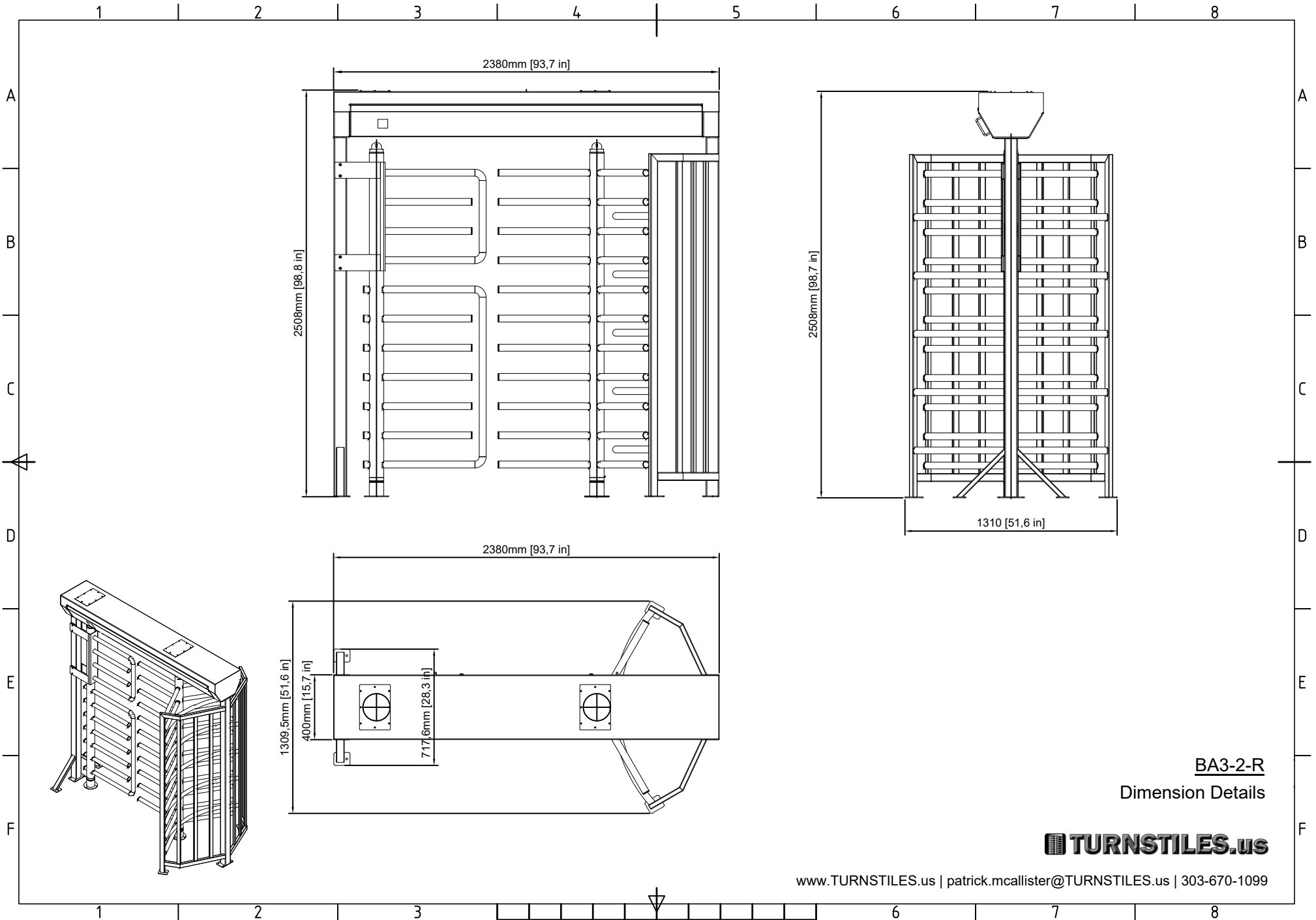




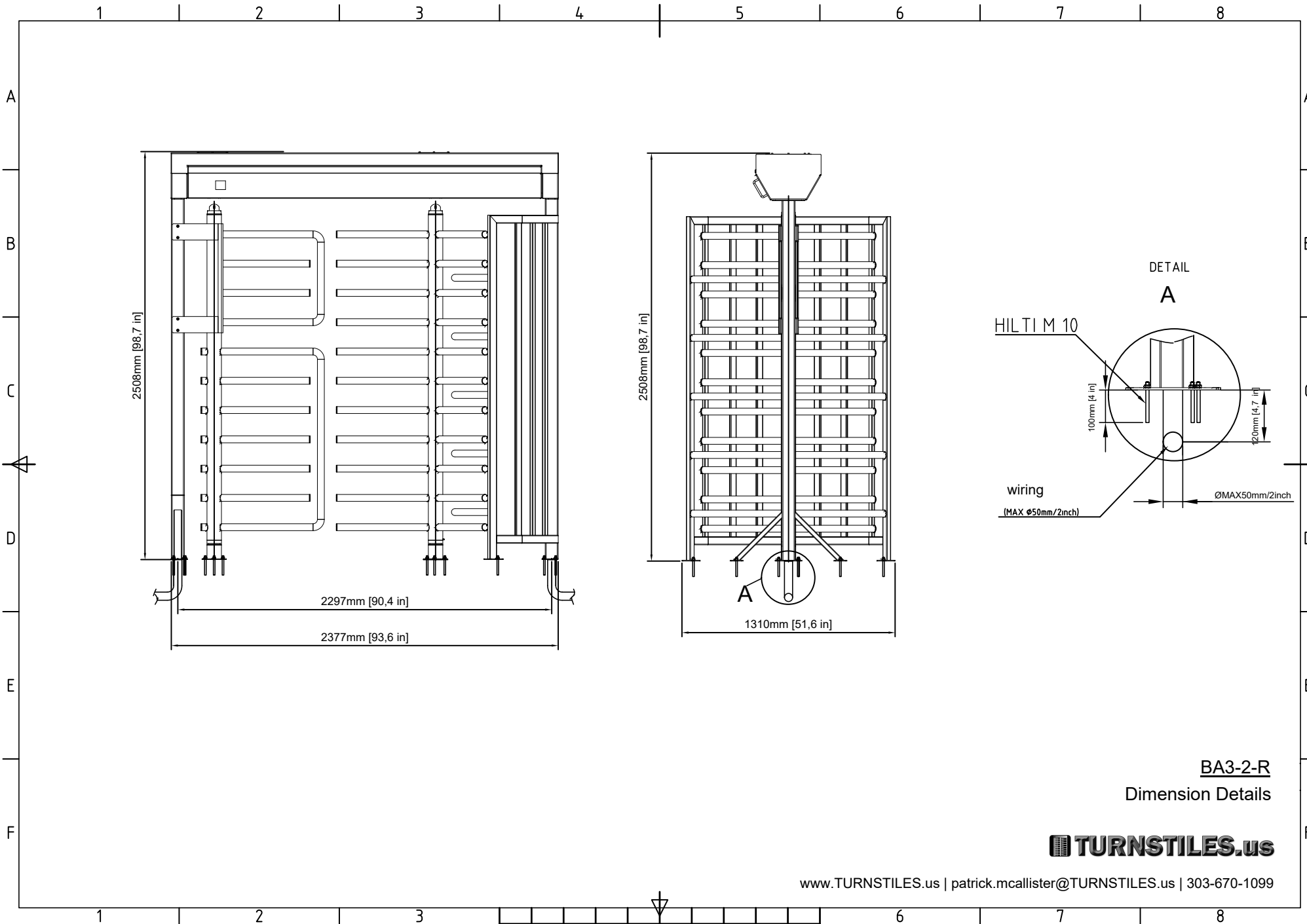
# TECHNICAL DRAWINGS - BA3-2-R



**BA3-2-R**  
Dimension Details



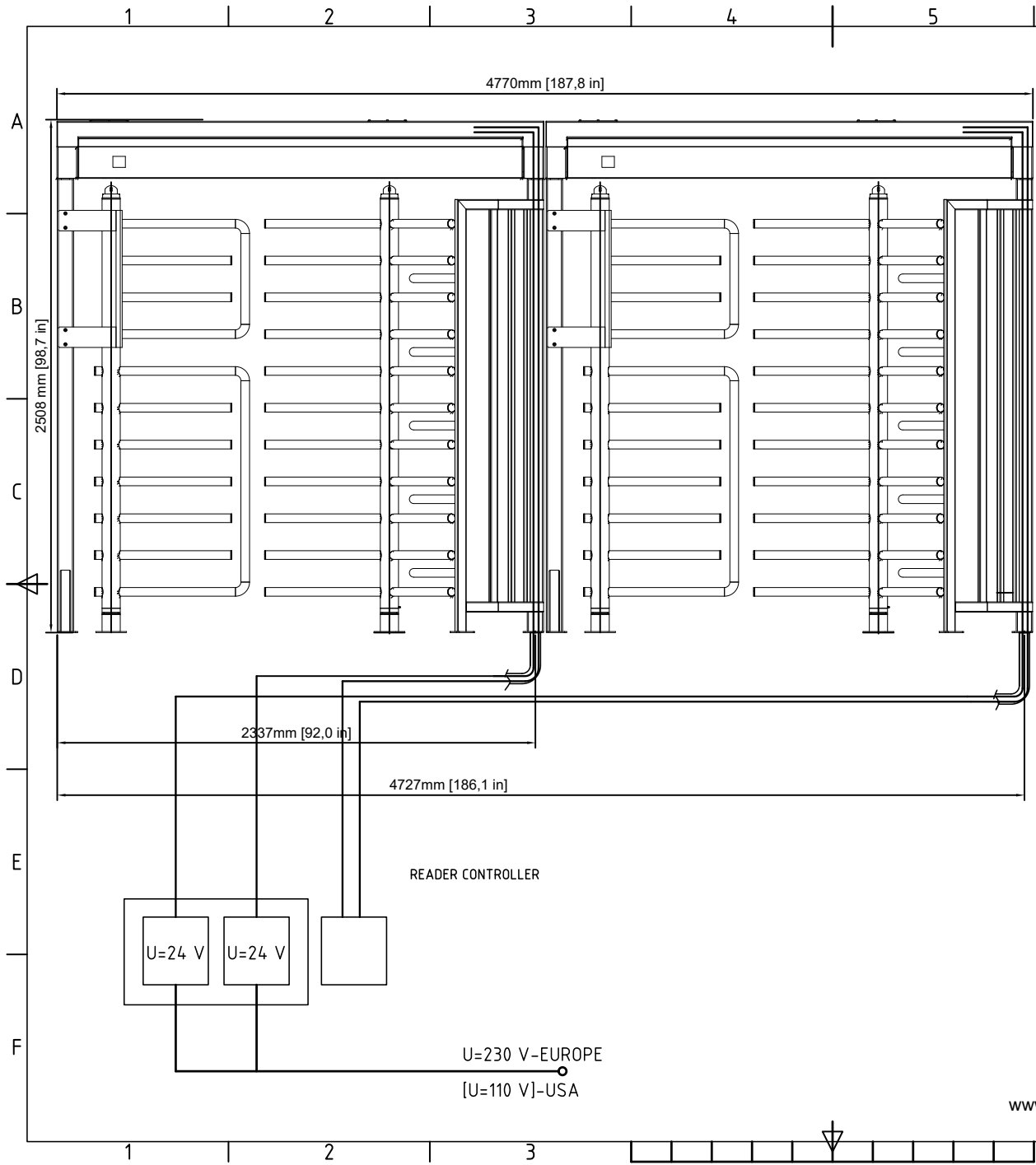
www.TURNSTILES.us | patrick.mcallister@TURNSTILES.us | 303-670-1099



**BA3-2-R**  
Dimension Details



www.TURNSTILES.us | patrick.mcallister@TURNSTILES.us | 303-670-1099

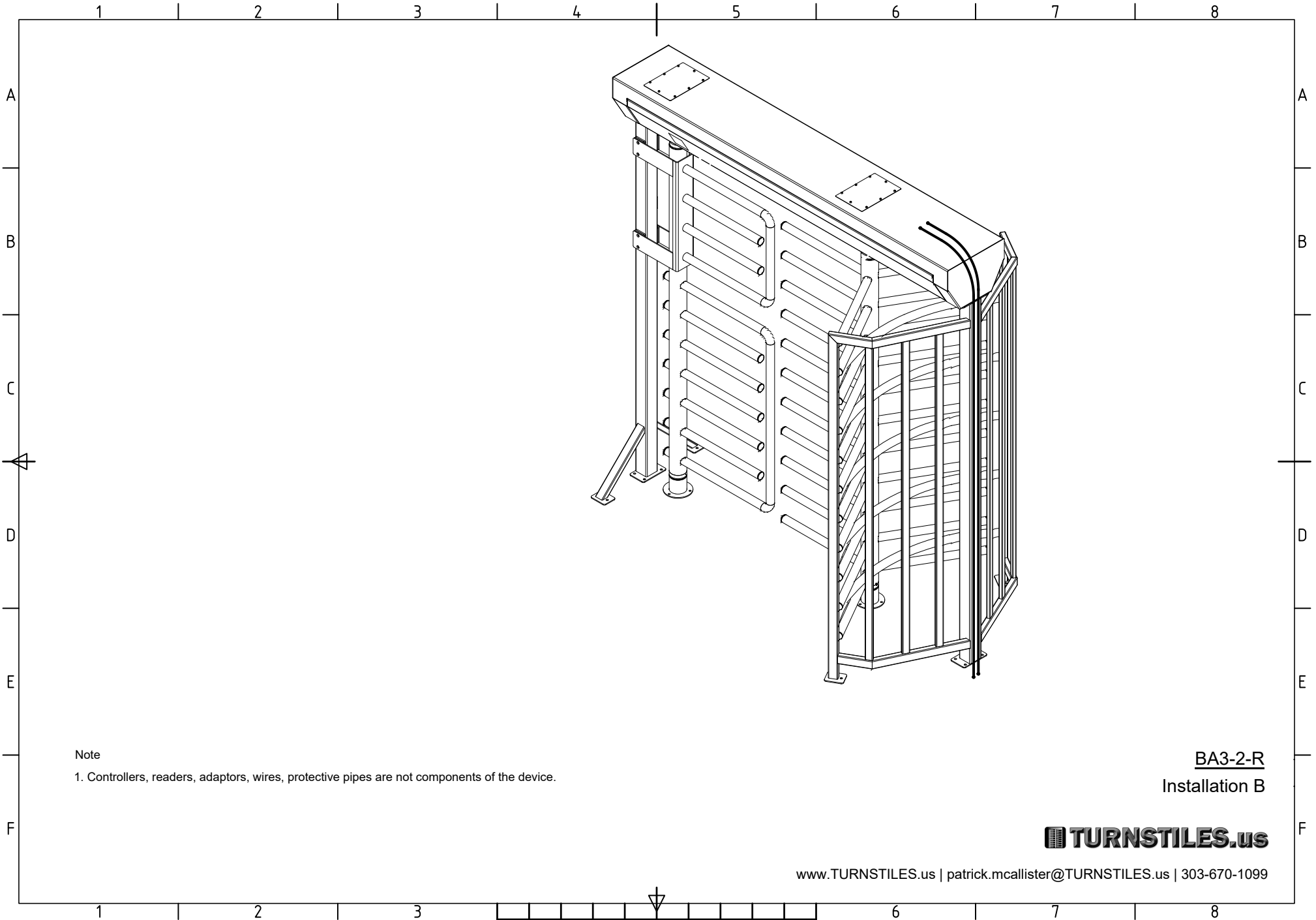


WIRING			
TYPE	FTP	YDYor	
QUANTITY	6	6	
SIZE	8x0.5 [mm <sup>2</sup> ] 8x0.0008 [in <sup>2</sup> ]	L < 50[m]	3x1.5 [mm <sup>2</sup> ]
		L < 50[yd]	3x0.003 [mm <sup>2</sup> ]
		L > 50[m]	3x2.5 [mm <sup>2</sup> ]
		L > 50[yd]	3x0.004 [mm <sup>2</sup> ]

**BA3-2-R**  
Installation A



www.TURNSTILES.us | patrick.mcallister@TURNSTILES.us | 303-670-1099

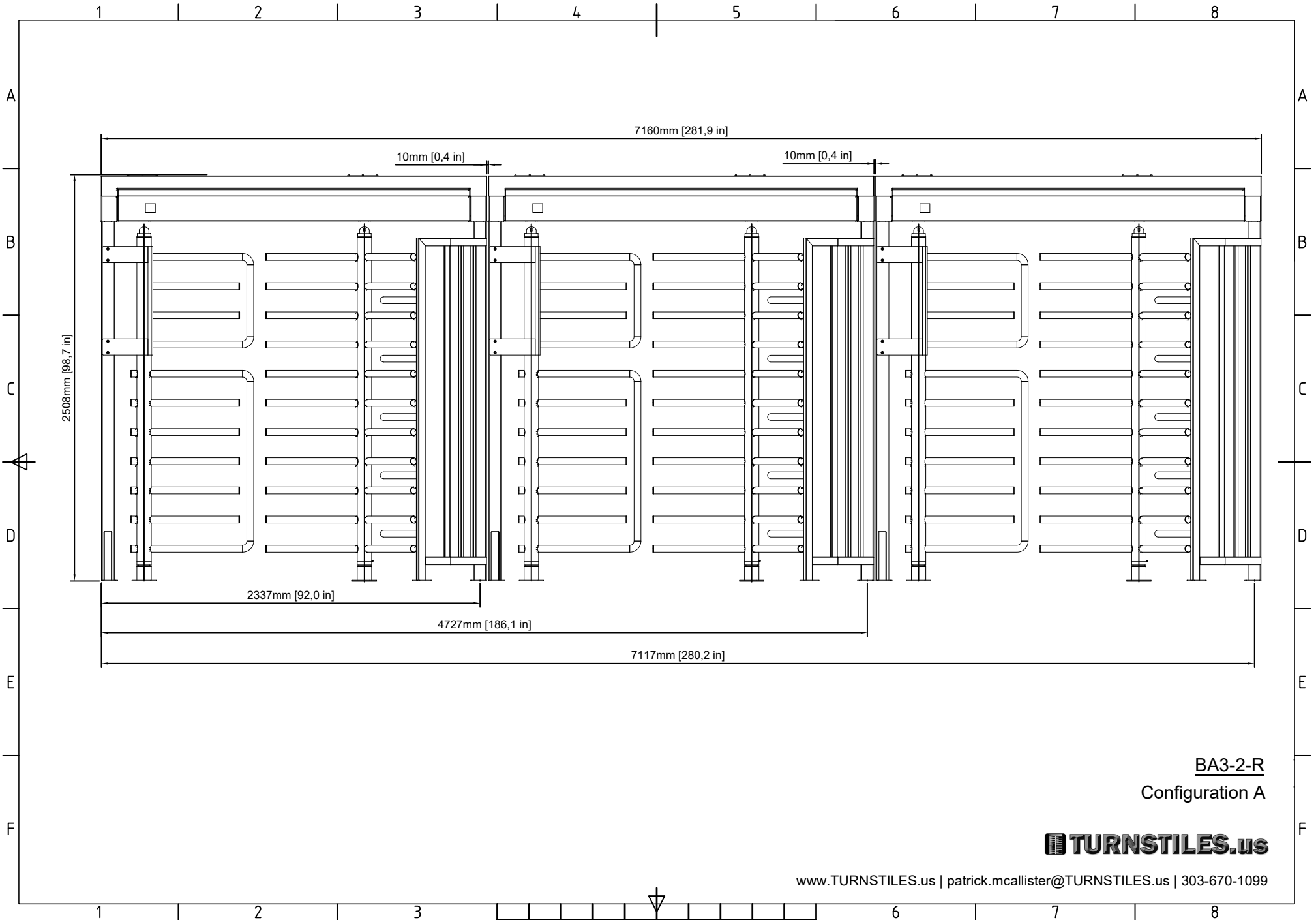


Note  
 1. Controllers, readers, adaptors, wires, protective pipes are not components of the device.

**BA3-2-R**  
 Installation B

**TURNSTILES.us**

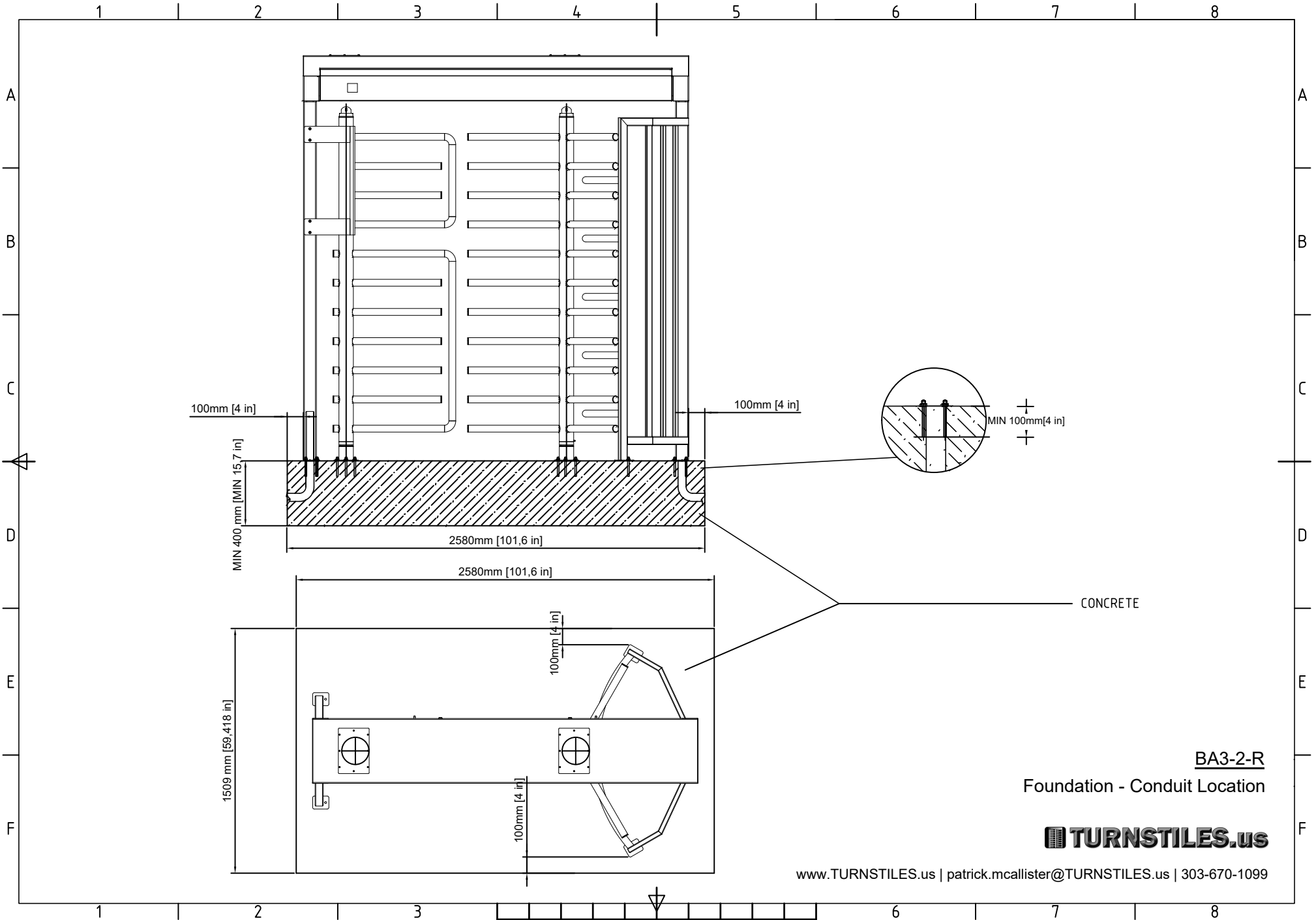
www.TURNSTILES.us | patrick.mcallister@TURNSTILES.us | 303-670-1099

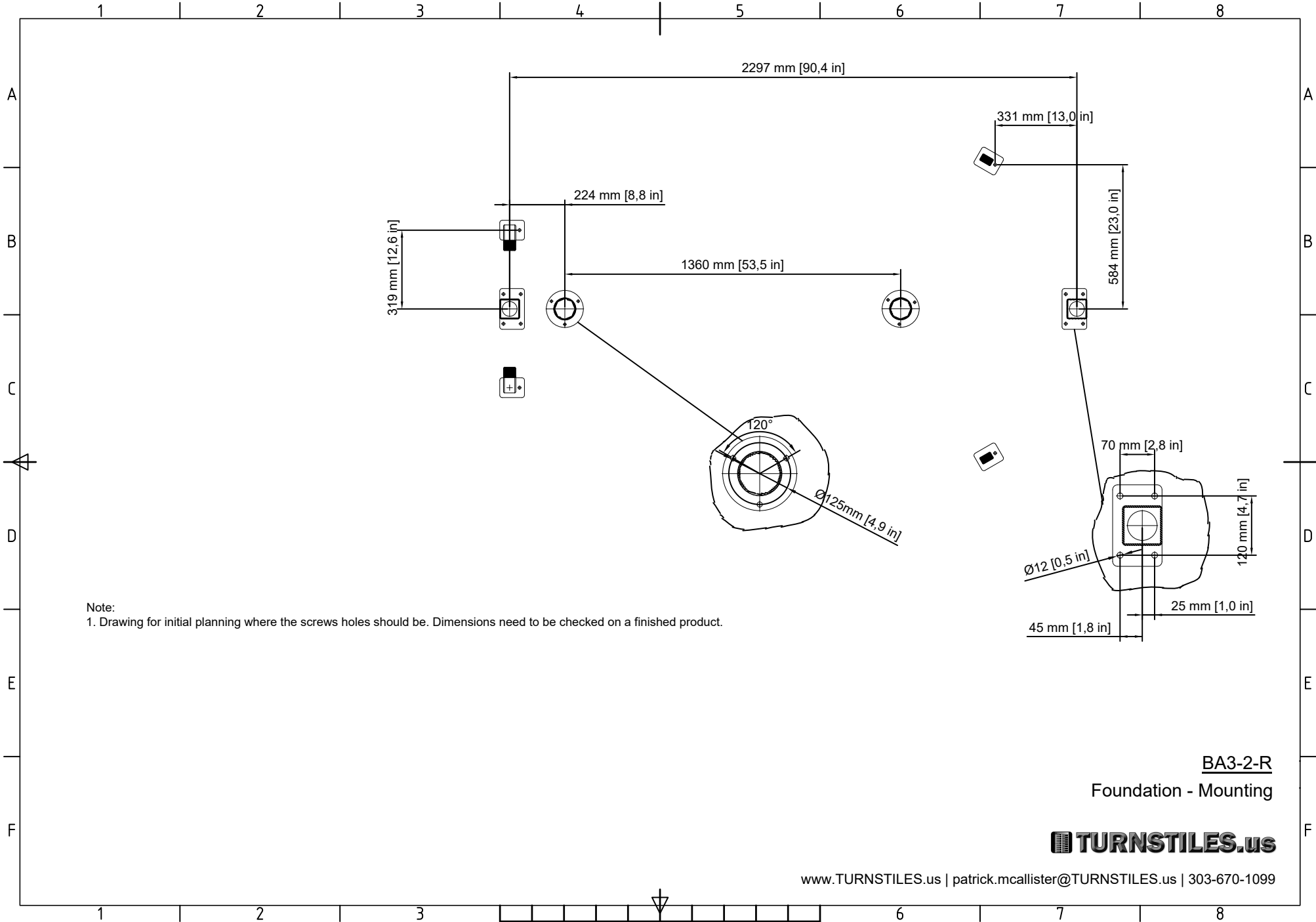


BA3-2-R  
Configuration A

**TURNSTILES.us**

www.TURNSTILES.us | patrick.mcallister@TURNSTILES.us | 303-670-1099





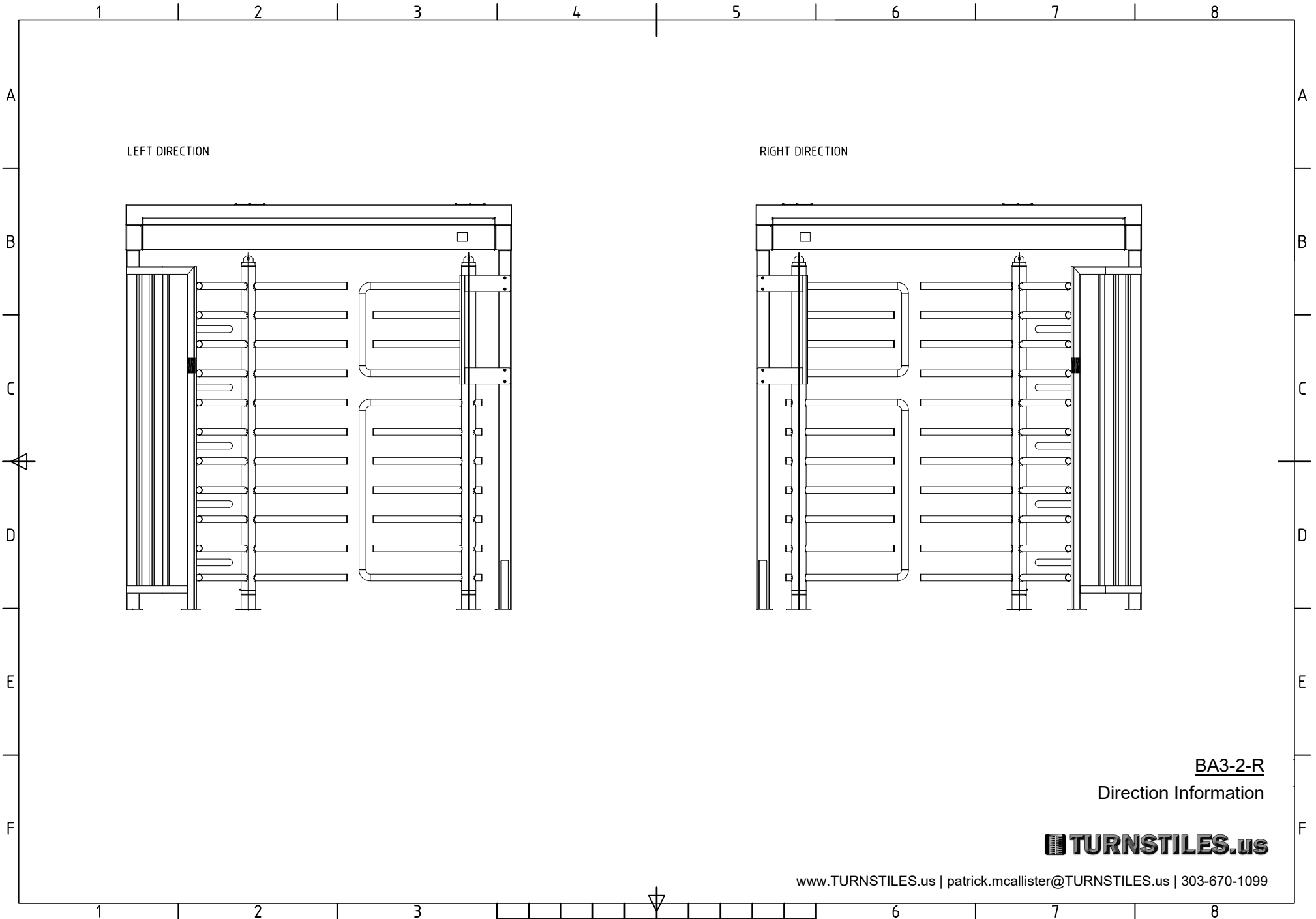
Note:  
 1. Drawing for initial planning where the screws holes should be. Dimensions need to be checked on a finished product.

**BA3-2-R**  
 Foundation - Mounting

**TURNSTILES.us**

www.TURNSTILES.us | patrick.mcallister@TURNSTILES.us | 303-670-1099

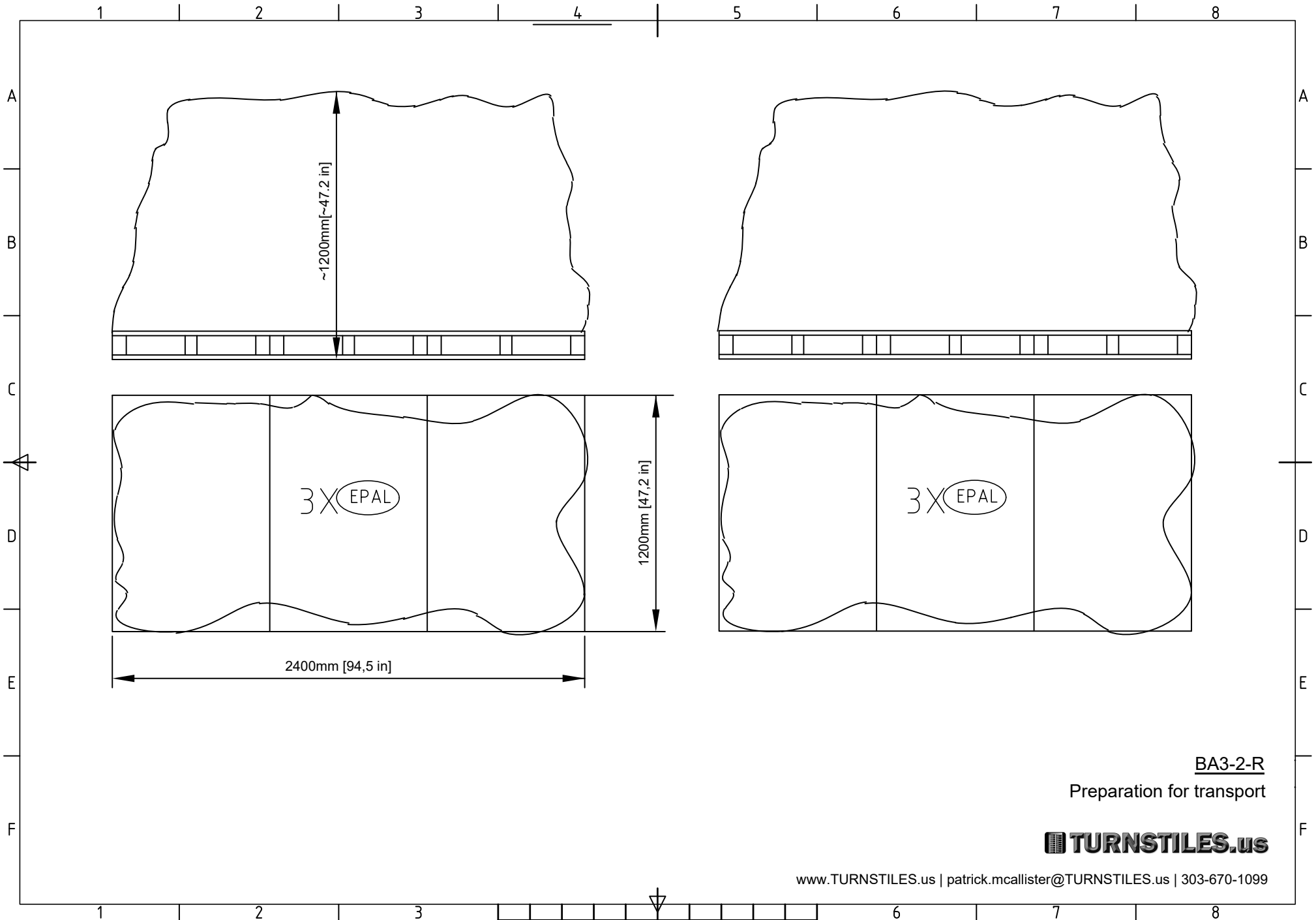




**BA3-2-R**  
 Direction Information

**TURNSTILES.us**

www.TURNSTILES.us | patrick.mcallister@TURNSTILES.us | 303-670-1099



BA3-2-R

Preparation for transport

**TURNSTILES.us**

www.TURNSTILES.us | patrick.mcallister@TURNSTILES.us | 303-670-1099