

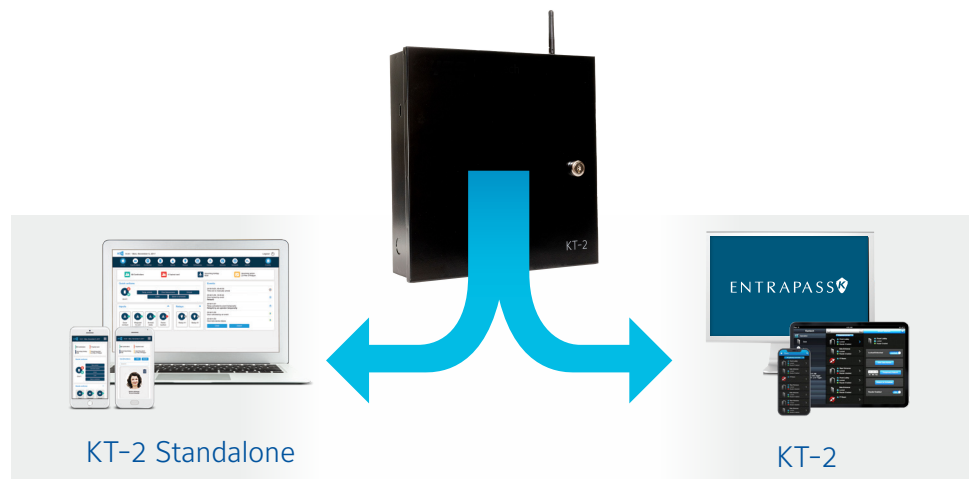
# KT-2 Ethernet Ready Two-Door Controller Data Sheet



## Key Features

- Configurable in two different modes: Provides advanced access control features when used with EntraPass Security Management Software (using an Ethernet, RS-485, or WiFi connection) or basic door security in Standalone Mode\*
- The built-in Wi-Fi antenna helps reduce installation costs when used with EntraPass
- Single capacitive touch button for fast controller enrollment (EntraPASS Security Management Software)
- Flexible power input – Power over Ethernet (PoE), PoE+ or 12 VDC
- End-to-end encryption using Kantech's ioSmart reader & smart card
- Compatible with EntraPass Security Management Software v8.40 or higher

KT-2 Ethernet-ready two-door controller supports two readers and can be configured in two user friendly operational modes. The KT-2 Standalone Mode offers basic two-door security using a simple web browser without the need to connect to a host system. Alternatively KT-2 can be used with the powerful EntraPass Security Management Software to provide more advanced and fully integrated access control features such as Wi-Fi connection. Utilizing the built-in Wi-Fi antenna reduces installation time and costs while providing an ideal solution for projects with challenging infrastructure designs that would require extensive cabling.



\* WiFi communication is not available in stand-alone mode.

## KT-2 Standalone Mode

### Simple and User-Friendly Access Control

Ideal for sites that only need basic door security, the KT-2 two-door controller features an embedded web server which enables it to operate in Standalone Mode – meaning no EntraPass software is required.

### One Combined Hardware and Web-based Software Solution

With no extra security software to purchase and install, and using an intuitive web browser for quick set up, KT-2 Standalone provides a cost-effective, yet feature rich alternative for two-door security.

### Responsive Web-based Software

Intuitive and responsive web-based software enables you to simply manage and configure your two-door security from anywhere, using a desktop or mobile device.

### Standalone Set-Up Wizard

KT-2 Standalone offers the ultimate simplicity in access control installation. Simply power up KT-2; connect to a web browser; follow the quick set-up configuration wizard and your two-door security is up and running in minutes.

## Standalone Mode Parameters

Function	Limit
Cardholders	2,000 (1,000 with image/ 1,000 without image)
Door Access	Per door, per user
Card Families or Site Codes	Unlimited
Events	60,000 (Offline Mode)
Operators	2 (Installer, Operator)
Schedules	20 (5 intervals)
Holidays	25
Action Scheduler	100
Monitored Points (Inputs)	4
Auxiliary Outputs	4
Browsers	Safari, Google Chrome, Mozilla Firefox, Internet Explorer, Microsoft Edge
Mobile Operating Software	iOS, Android (No native app)
Integrations	Basic intrusion via relays
Upgrade Path	EntraPass/ hatatrix
Languages	English, French, Spanish, Italian
Firmware version	KT-2 Standalone version 3.03 & higher. (Subject to firmware upgrade fees)

## KT-2 Using EntraPass

### Advanced and Fully Integrated Access Control

Using EntraPass software a single KT-2 Controller can control two doors or can act as a 'head IP controller', linking together 31 additional controllers under one IP connection in EntraPass. This significantly reduces the amount of IP connections required to EntraPass and reduces programming time in the software, thus creating installation cost benefits and a highly scalable solution.

### One Touch for Quick Connection to EntraPass

The KT-2 controller features a capacitive touch-sensitive button for plug and play installation. Simply provide an IP connection, push a single button and you're done. There is no need to manually enter MAC/Serial numbers. With its innovative single button programming, the KT-2 is automatically detected and enrolled onto the EntraPass security management software (v8.40 and higher). Quickly connect using Universal Plug and Play (UPnP) protocol allowing the controller to be network discoverable without requiring the IP address\*.

With its Ethernet port for direct network connection, its Power over Ethernet capabilities, the WiFi and its unique single button programming, the KT-2 controller is up and running in just a few simple steps.



### EntraPass Web & Go

Combine the KT-2 controller with EntraPass security management software and the EntraPass web and go mobile applications to create an innovative solution that installs quickly, can be managed remotely and provides a superior user experience. Admin users can connect via a web browser or a dedicated app on their smart phone/tablet and manage common security tasks wherever they are.

### Alarm Panel Integration

DSC MAXSYS, PowerSeries, PowerSeries Neo and PowerSeries Pro alarm panel data integration can be accomplished by connecting it to the KT-2 controller. Using this controller; EntraPass Special, Corporate or Global Editions are able to receive intrusion events, view the status of zones and partitions, and program users' code. In addition the system can be armed/disarmed (single or multiple partitions) via the reader or manual operation from the workstation.

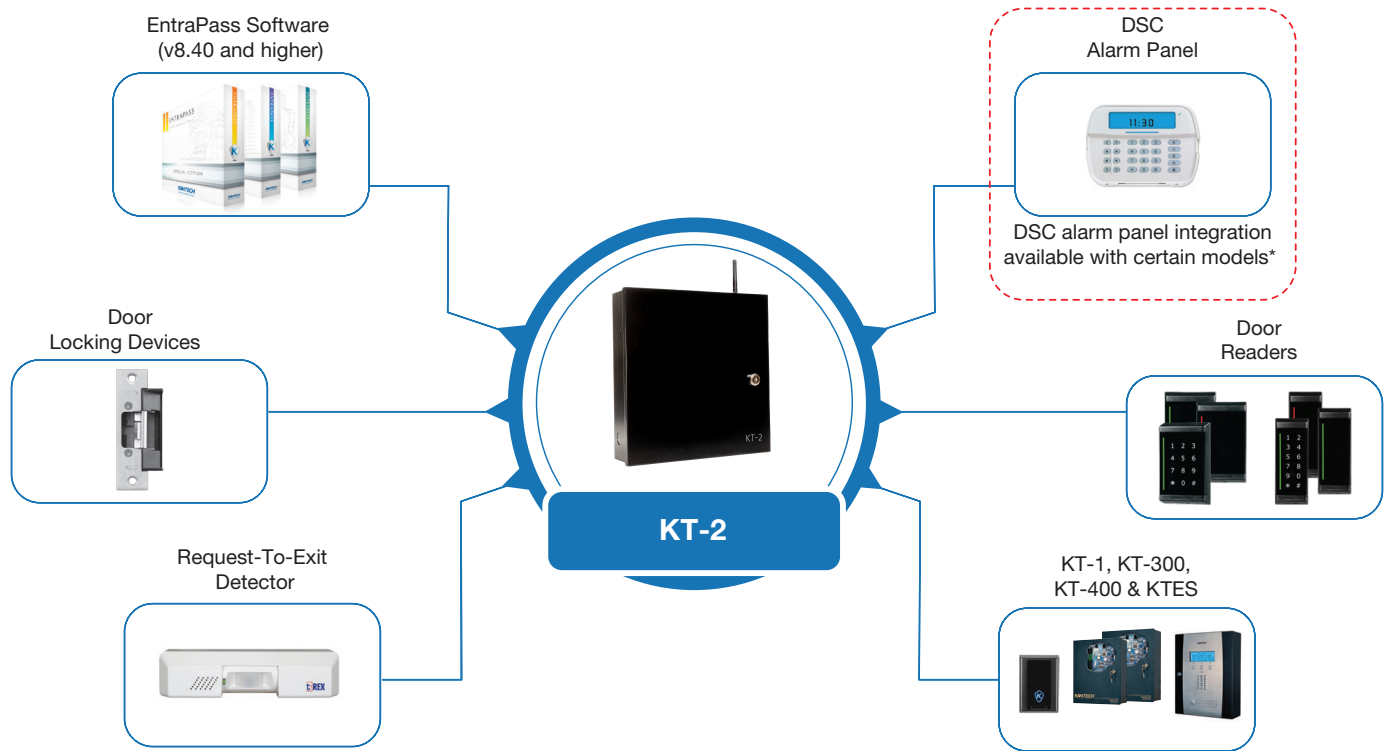
### Encrypted and Efficient Network Communication

The KT-2 controller uses 128-bit AES encryption to protect communication. It also acts as a polling device to ensure the controllers communicate with EntraPass only as required, thus reducing network traffic. Flexible options allow KT-2 to connect to EntraPass via:

- On-board IP (Ethernet) port
- RS-485 (COM1) port for communication between the EntraPass Gateway/ Kantech Network Communication Controller (KTNCC) and KT-1/KT-300/KT-400 door controllers.

\*Universal Plug and Play (UPnP) feature available when KT-2 configured in either EntraPass Security Management Software or Standalone Mode

## Basic System Diagram



## Specifications

DC power input	11.3 VDC to 14.0 VDC, 1.5 A
PoE	13 W in, 0.9 A/13 VDC out
PoE+	25.5 W in, 1.2 A/13 VDC out
Operating temperatures	For UL listed installations: 0°C to 49°C (32°F to 120°F) indoor use only For European compliant installations: -10°C to 55°C (14°F to 131°F) Environmental Class II
Humidity level	85% relative humidity non-condensing
Cabinet dimensions	11.3 in. x 11.7 in. x 3.1 in. (28.702 cm x 29.718 cm x 7.874 cm)
Weight of the controller	4.75 lb (2.16 kg)
Reader types	Wiegand, proximity, ABA Clock and Data, bar code, magnetic, integrated keypad, smartcard and others
Reader power output	12 VDC 500 mA maximum, protected and supervised
Monitored points (zone inputs)	8 monitored points (Z1 to Z8), NO/NC without EOL (DRY), single EOL, double EOL and 1 fixed-function tamper input
Points maximum wiring	AWG #22-600 m (2000 ft) For the relevant reader's maximum wiring specifications, refer to the reader's installation manual
Door strike power supervised	750 mA for one output or 1.0 A total (in PoE 13 W, 375 mA each or 750 mA total). Lock outputs are supervised for open circuit or short to ground fault detection
Auxiliary reader outputs	LEDs and buzzer (BUZ), 25 mA maximum each, open collector outputs

Relay controlled outputs	2 onboard Form C relays, 30 VDC, 3 Amps each, 0.6 power factor
Communication ports	1 x RS-232 with RJ-12, 2 x RS-485, 1 x Ethernet 10/100 Base-T with RJ-45, WiFi Note: Use the RS-232 for integrations, with a maximum cable length of 3 m (10 ft).
Wi-Fi specifications	Station mode wireless 802.11 b/g/n (2.4 GHz only) Access point wireless 802.11 n (2.4 GHz only)
Auxiliary power	1.0 A maximum. This is shared with door strike power
Communication speed	1200 to 115200 Bauds (automatic detection) over RS-485 10/100 Mb/s BaseT over Ethernet 1 Mb/s over Wi-Fi
Flash memory	256 MB NAND flash for application, storage and standalone event buffer holding 60,000 events
Network type	IEEE 802.00 b/g/n (Wireless LAN)
Frequency	2412-2471 MHz
RF channels	US/Canada: 1-11 Others: 1-13 Antenna gain at 2.4 GHz: 2.5 dBi (maximum)
RAM memory	128 MB DDR2 for application loading and running
Network autonomy	Distributed data and processing
Certifications/ Listing	United States: Transmission complies with FCC Part 15.247 Regulations for Low Power Unlicensed Transmitters. Transmitter FCC identification: YOPGS2101M FCC compliant to CFR 47, Part 15, Subpart B, Class A; KT-2-M: UL 294 and UL 1076 listed equipment. Canada: Industry Canada IC: 9154-GS2101M. ICES-003 (A)/NMB-003 (A)
AES Encryption	NIST CAVP validation number AES 3092, key length 128

Note: The KT-2 restarts automatically after total power loss and keeps its programming after an unlimited time of power interruption. The design uses flash memory to save access rules. For PoE-powered KT-2 and Class B installations, use a ferrite on the Ethernet cable.

Note: The KT-2 Wi-Fi performance level depends on the type of router that you use and on the installation environment. The KT-2 Wi-Fi access point mode is used for configuration: it requires a mobile, tablet, or laptop that has Wi-Fi capability and a web browser.

Note: Total power for readers, door strikes, outputs, and auxiliary power must not exceed 1.5A at 14VDC.