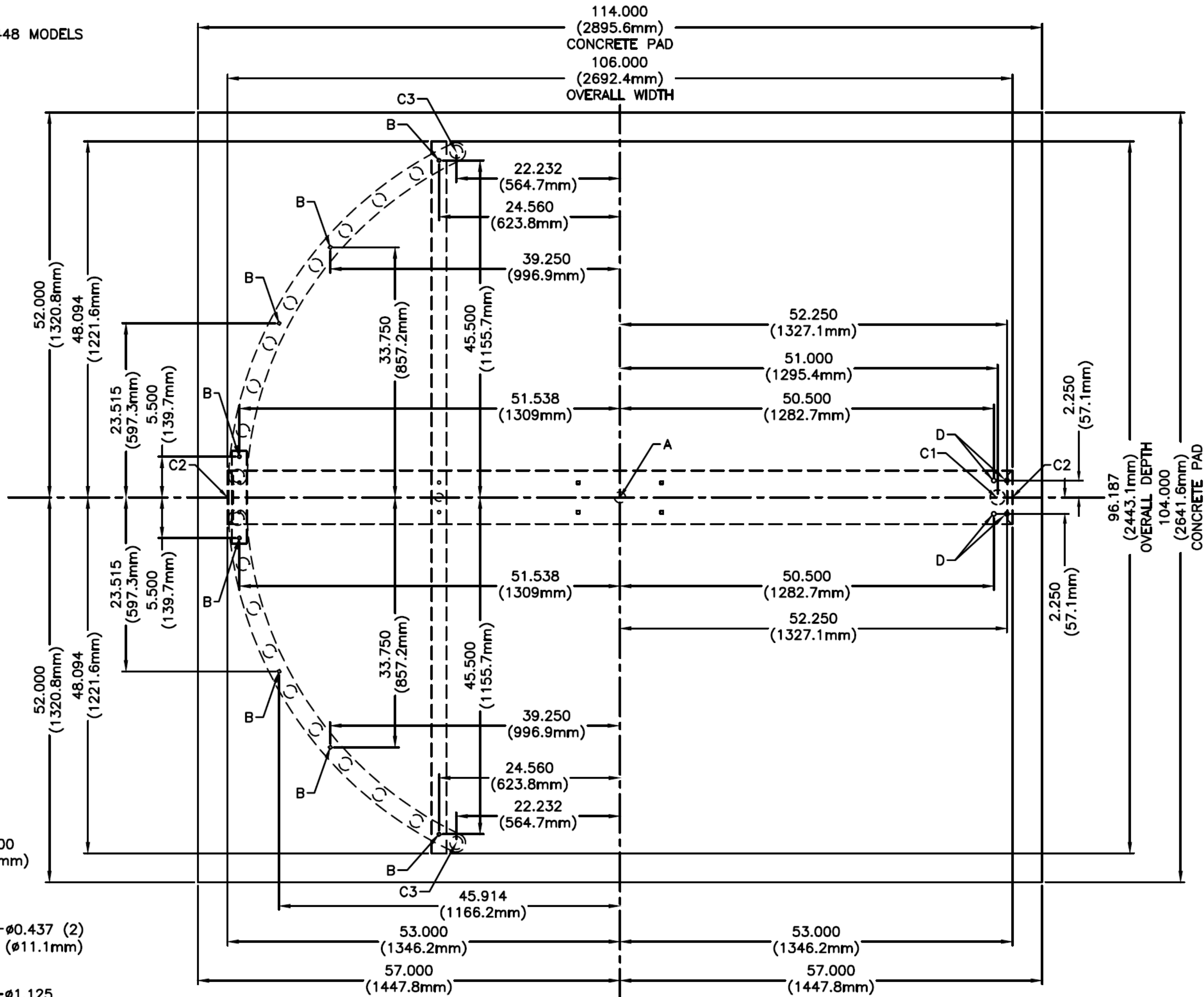
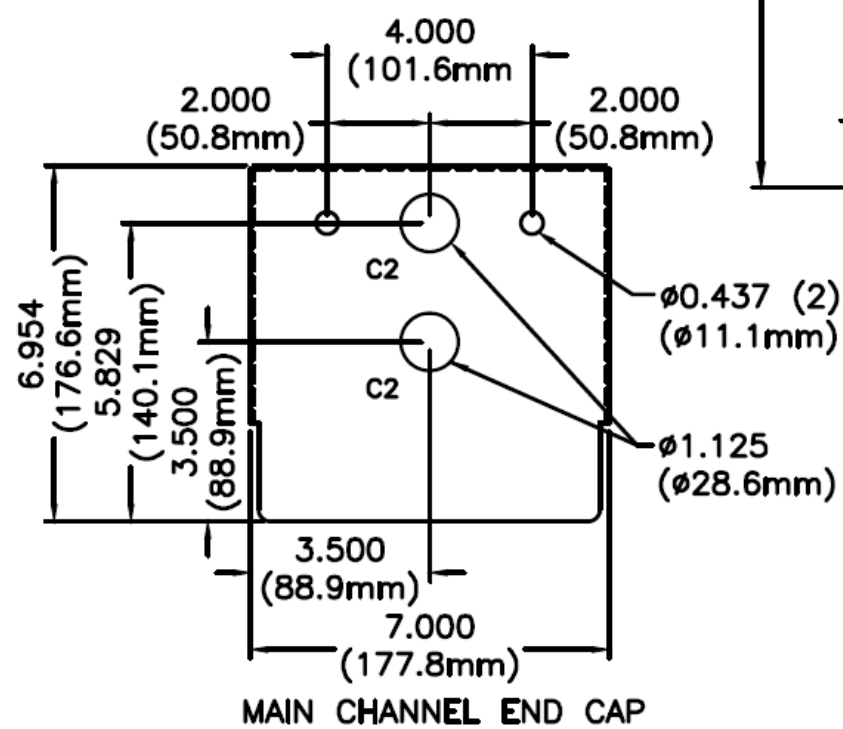


FOR USE ON STAINLESS STEEL HS448 MODELS

- ANCHOR POINTS**
 A = ϕ .625 X 4.500 STAINLESS STEEL CONCRETE ANCHOR QTY 1
 B = ϕ .375 X 4.500 STAINLESS STEEL CONCRETE ANCHOR QTY 8
 D = ϕ .500 X 4.500 STAINLESS STEEL CONCRETE ANCHOR QTY 4
- SUGGESTED CONDUIT LOCATION**
 C1 = THROUGH VERTICAL BARRIER (PREFERRED)
 C2 = THROUGH MAIN CHANNEL END CAP (TYP BOTH SIDES)
 C3 = THROUGH VERTICAL YOKE TUBE
- CONCRETE PAD NOTE:**
 POUR PAD 4.000 [101.6mm] - 6.000 [152.4mm] THICK,
 AND INSURE IT IS LEVEL \pm .125 [3.1mm]



FIRST DRAWN	BY
01-14-2014	LC III
REVISED	BY
04-01-2019	LC III
COPYRIGHT © TURNSTILES.US Copyright © Turnstiles.us All rights reserved. Reproduction or translation of this work without the express written permission of TURNSTILES.US is unlawful and is an infringement of intellectual property belonging to TURNSTILES.US. All drawings and/or designs are restricted for use exclusively with a purchase, installation, and/or support from Turnstiles.us. Any other use of these materials is a violation of copyright law. Request for additional information should be addressed to the Legal Department, Turnstiles.us.	

TURNSTILES.US
 SECURING THE USA and the GLOBE since 1989
 www.TURNSTILES.us
 Call: 303-670-1099 | Text: 303-918-9787
 patrick.mcallister@turnstiles.us

DIMENSIONS	
HS448-S-SS Extra-Wide Full Height Single Turnstile 304 Stainless Steel Anchor Base Conduit ABC Equipment Dimension Detail	
DRAWING:	
HS448-S-SS Extra-Wide Full-Height Single Turnstile Stainless Steel ABC DET	
DATE:	04-01-2019
PAGE:	1 OF 1