

The Stadium FastPass™ Series Waist-High ADA Swing Gate • Interior and Exterior Application

FP500-ADA



The Stadium FastPass™ Series is made for years of reliable service in high traffic/volume applications like stadiums, convention centers, landmarks and military bases. The cabinets are constructed of heavy 14-gauge, 300 series satin stainless steel and feature our 6500 Series Control Head (with auto indexing and shock suppression technology). Thousands are currently in use at leading pro-sports venues, amusement parks and highprofile attractions worldwide. The Stadium FastPass is the ticket to managing large crowds with reliability and speed.



FP500-ADA
ADA gate can be motorized

The Stadium FastPass™ Series Waist-High

ADA Swing Gate • Interior and Exterior Application

FP500-ADA



Applications:

This ADA compliant unit is the matched partner to the FastPass waist-high turnstiles, which are made for years of reliable service in high traffic / volume environments like stadiums, convention centers, amusement parks, landmarks and military bases.

Material:

- Our signature 304 stainless steel/ No. 4 satin finish

Design & Construction:

- Designed for secure operation with aesthetics in mind
- Cabinet inner and outer shells are constructed of (14 gauge) 304 stainless steel/ No. 4 satin finish
- Arms constructed of 1-5/16" (33mm) diameter (12 gauge) stainless
- Minimal exposed hardware

Measures:

- Height: 37" (940mm)
- Width: 27.25" (692mm)
- Depth: 10.75" (273mm)
- Passage: 36" (914mm)



Operations:

6500 Series Control Head, featuring:

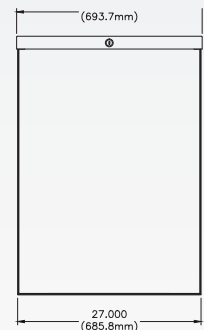
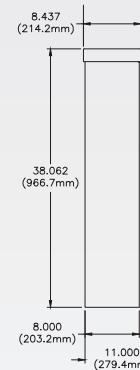
- Auto-indexing (self-centering) with adjustable hydraulic shock suppression
- Hardened tool steel locking bars, cam and roller assemblies
- Permanently lubricated bearings
- Your choice of manual or electronic control on both directions
- Nearly universal integration to any number of access control systems
- Your choice on each electronic direction of locking or unlocking on power failure

Options:

- Bidirectional key overrides (fail open only)
- Daylight visible indicator lights
- 8 digit key resettable LCD counter with seven year lithium battery
- ADA push to exit placard button
- Variable arm lengths (up to 40")
- Signage bracketry
- Variable speed self-opening motorized arm
*Comes with safety clutch to prevent injury
- Coin/token acceptor
- Bill acceptor
- Ticket drop box
- Additional options available on request

Warranty:

Units are warranted against defects in materials and workmanship for a period of one year from date of delivery. See warranty information for specific details.



Dimensions are approximate.

Electrical Specifications:

Input Voltage: 100-240 VAC
 Input Current: 1.3 - .55 A
 Frequency: 50/60 Hz
 Storage Temperature: -4 to 158 °F
 Operating Temperature: 32 to 122 °F
 Operating Voltage: 24VDC
 Operating Current: 1.2 A (typical)

Standards and Codes:

Austenitic stainless steel:
 ASTM A240, A249, A276
 Hot rolled steel:
 AISI C-1020, AISI C-1018
 Hot dipped galvanizing:
 ASTM A-143, ASTM A-153-80
 Stainless steel fasteners:
 ASTM A-320
 American Welding Society (AWS)
 Standard D 1.1