

# www.EntraPASS.com

**NEW**

PCL



Product Information

## People Counting Laser (PCL)

The revolution in counting people

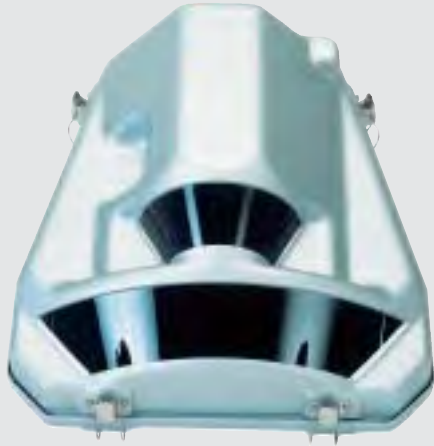


8641 S. Warhawk Rd. Conifer, CO 80433

Patrick.McAllister@EntraPASS.com

(303) 670-1099 (303) 679-8949 fax

## The revolution in people counting: the EntraPASS PCL



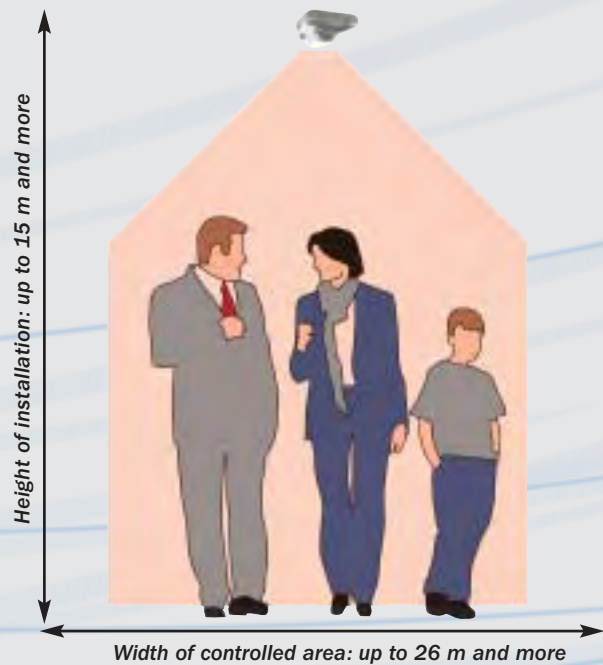
The EntraPASS PCL is the most innovative system on the market for counting people in indoor crowded areas, such as shopping malls, museums and stations. It is based on a powerful laser instrument able to measure distances and profiles. It is more accurate and reliable than traditional counters, such as light-beams, infrared detectors and cameras.

### Features and advantages

- Easy to install and get started
- Easy definition of shape and size of counting area
- Installation height up to 15 m and more
- Width of controlled area up to 26 m and more
- Filtering and exclusion of small animals and trolleys
- Detects directions of movement (IN/OUT)
- Counts persons walking in parallel in crowds
- Counts persons walking in opposite directions
- No influence from environment, temperature or light
- Maintenance free

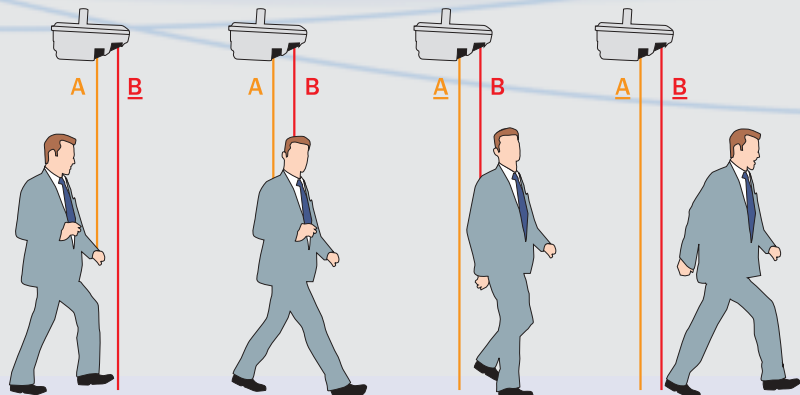
### Technical features

- Passage width: 1 m to 26 m
- Installation height: 2.5 m to 15 m
- Scanning angle: 90°
- Maximum passage speed: 2.4 m/s
- Scanning frequency: 10 Hz + 5 %
- Case colour: white aluminium (RAL 9006)
- Interface: RS 422 (DSUB 9)
- Laser type: Infrared 905 nm, eyesafe Class 1
- Operating temp. range: 0 to 40 °C
- Enclosure rating: IP 40 (DIN 40 050)
- Dimensions in mm: 350 x 365 x 180 (w x h x d)
- Weight: 5.9 kg



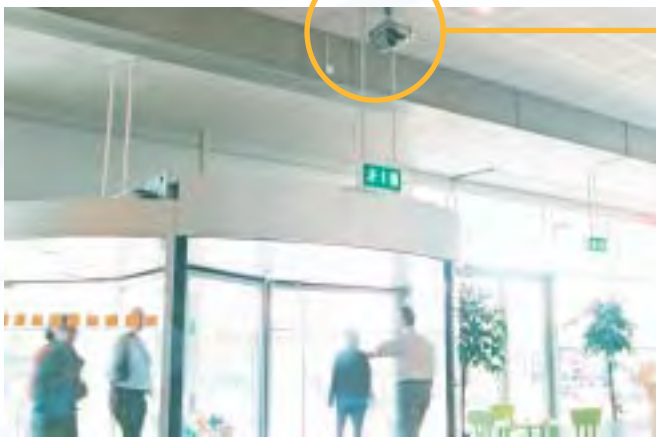
### Principle of operation:

The measurement scanner generates a double vertical laser curtain. Persons walking through the light curtains are counted precisely and their direction is detected.

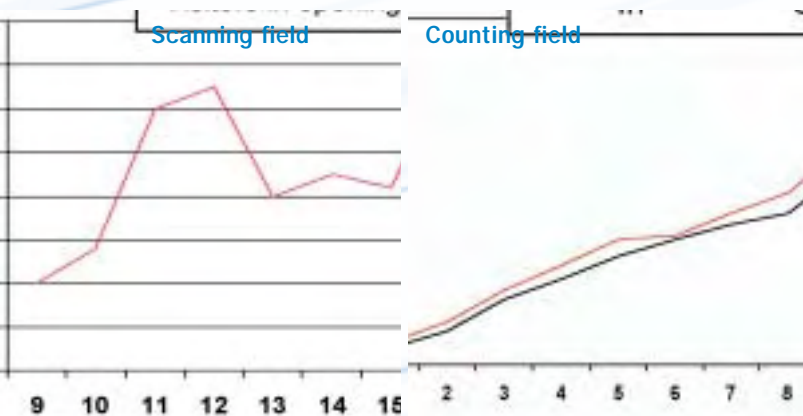


## People counting made easy ... like saying "1,2,3!"

The installation procedure for the EntraPASS PCL is simple and requires a minimal amount of time, thanks to the device's internal characteristics and to the software program that runs under Microsoft Windows™. Once the PCL has been properly installed above the area to be monitored, a simple program takes you through the device's various phases of initialisation.



**1.** The PCL is installed over a passage area to be monitored. The correct mounting and fixing is a prerequisite for the correct counting of the instrument. Installation height can be from 2.5 m up to 15 and more. The passage width depends upon the height of the installation, and can measure up to 26 m and more.



**2.** The installation software that runs under Microsoft Windows™ quickly and easily guides the operator through the correct process of configuring the "scanning" and "counting" fields. The internal laser measurement scanner detects the background features (floor and walls), which are taken into account when defining the active areas for counting.



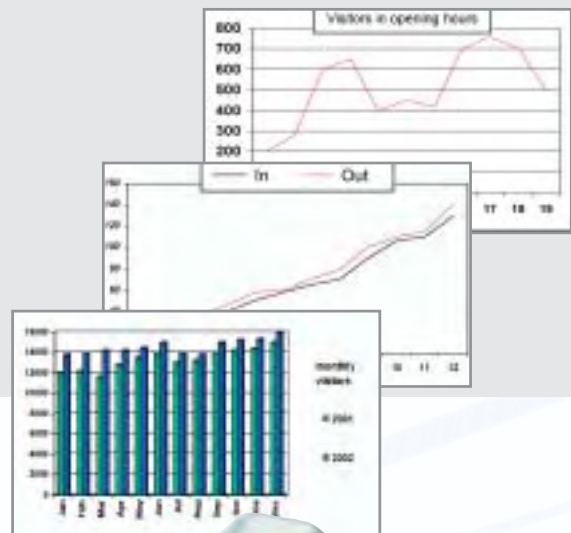
**3.** Once activated, the PCL will reliably detect all people passing through the defined area including their direction of movement. Animals and trolleys can be filtered-out by correctly positioning the counting field. The counting process is monitored by means of 2 static outputs (IN/OUT) or by means of a data-transmission line (RS 422), which can be connected to a centralized surveillance unit.



## Why to count people

There are several reasons why it is important to count the number of people crowding in public areas, such as shopping malls, museums, stadiums, recreation parks, train stations and airports.

The People Counting Laser "PCL" is your reliable partner during the difficult task of counting the people moving through doors, along corridors, in arcades and halls.



## ... for business reasons

- to optimize the opening hours of shops and malls
- to verify the response of people to marketing campaigns
- to evaluate the efficiency of promotional events
- to monitor the efficiency of the sales staff
- to record the distribution of the people in different areas
- to tune the services to the actual presence of customers

## ... and for security reasons

- to assign adequate surveillance staff
- to prepare evacuation plans matching the actual number of visitors
- to define the safest evacuation routes depending on people numbers and flow of crowds



### Where to count

- Shopping malls
- Supermarkets
- Shopping arcades
- Airports
- Metro and train stations
- Recreation parks
- Stadiums
- Pedestrian tunnels
- Museums
- Exhibitions and show rooms

