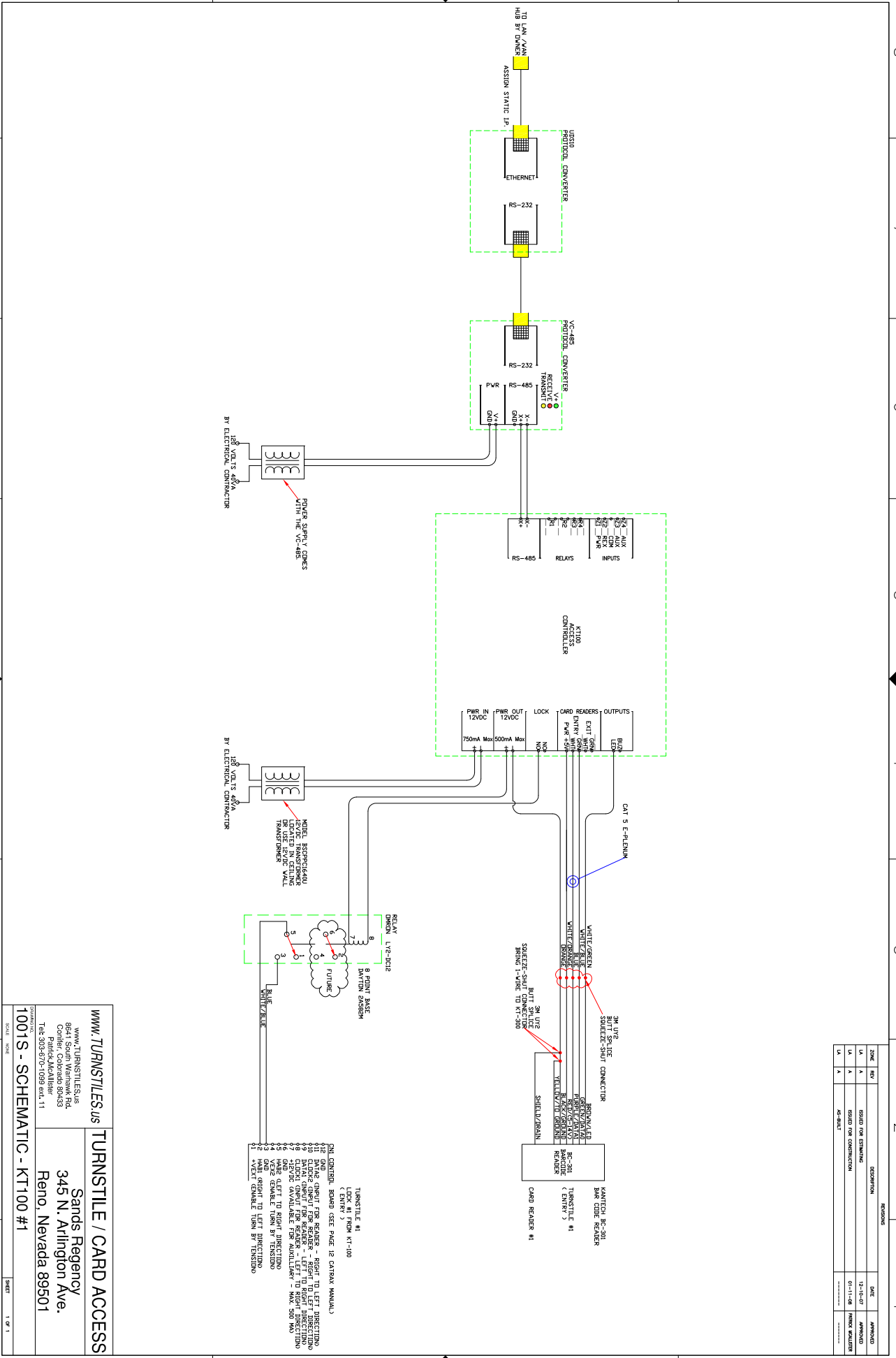


ZONE	REV	DESCRIPTION	DATE	APPROVED
LA	A	ISSUED FOR ESTIMATING	12-12-07	JAMES GIBSON
LA	A	ISSUED FOR CONSTRUCTION	01-11-08	JAMES GIBSON
LA	A	AS-BUILT		



TURNSTILE #1  
 (LOCK #1 FROM KT-100  
 < ENTER >)

RELAY CONTROL BOARD (SEE PAGE 12 CARTAK MANUAL)

01 DATA OUTPUT FOR READER - RIGHT TO LEFT DIRECTION

02 DATA OUTPUT FOR READER - LEFT TO RIGHT DIRECTION

03 DATA OUTPUT FOR READER - LEFT TO RIGHT DIRECTION

04 DATA OUTPUT FOR READER - LEFT TO RIGHT DIRECTION

05 DATA OUTPUT FOR READER - LEFT TO RIGHT DIRECTION

06 DATA OUTPUT FOR READER - LEFT TO RIGHT DIRECTION

07 DATA OUTPUT FOR READER - LEFT TO RIGHT DIRECTION

08 DATA OUTPUT FOR READER - LEFT TO RIGHT DIRECTION

09 DATA OUTPUT FOR READER - LEFT TO RIGHT DIRECTION

10 DATA OUTPUT FOR READER - LEFT TO RIGHT DIRECTION

11 DATA OUTPUT FOR READER - LEFT TO RIGHT DIRECTION

12 DATA OUTPUT FOR READER - LEFT TO RIGHT DIRECTION

13 DATA OUTPUT FOR READER - LEFT TO RIGHT DIRECTION

14 DATA OUTPUT FOR READER - LEFT TO RIGHT DIRECTION

15 DATA OUTPUT FOR READER - LEFT TO RIGHT DIRECTION

16 DATA OUTPUT FOR READER - LEFT TO RIGHT DIRECTION

17 DATA OUTPUT FOR READER - LEFT TO RIGHT DIRECTION

18 DATA OUTPUT FOR READER - LEFT TO RIGHT DIRECTION

19 DATA OUTPUT FOR READER - LEFT TO RIGHT DIRECTION

20 DATA OUTPUT FOR READER - LEFT TO RIGHT DIRECTION

21 DATA OUTPUT FOR READER - LEFT TO RIGHT DIRECTION

22 DATA OUTPUT FOR READER - LEFT TO RIGHT DIRECTION

23 DATA OUTPUT FOR READER - LEFT TO RIGHT DIRECTION

24 DATA OUTPUT FOR READER - LEFT TO RIGHT DIRECTION

25 DATA OUTPUT FOR READER - LEFT TO RIGHT DIRECTION

26 DATA OUTPUT FOR READER - LEFT TO RIGHT DIRECTION

27 DATA OUTPUT FOR READER - LEFT TO RIGHT DIRECTION

28 DATA OUTPUT FOR READER - LEFT TO RIGHT DIRECTION

29 DATA OUTPUT FOR READER - LEFT TO RIGHT DIRECTION

30 DATA OUTPUT FOR READER - LEFT TO RIGHT DIRECTION

31 DATA OUTPUT FOR READER - LEFT TO RIGHT DIRECTION

32 DATA OUTPUT FOR READER - LEFT TO RIGHT DIRECTION

33 DATA OUTPUT FOR READER - LEFT TO RIGHT DIRECTION

34 DATA OUTPUT FOR READER - LEFT TO RIGHT DIRECTION

35 DATA OUTPUT FOR READER - LEFT TO RIGHT DIRECTION

36 DATA OUTPUT FOR READER - LEFT TO RIGHT DIRECTION

37 DATA OUTPUT FOR READER - LEFT TO RIGHT DIRECTION

38 DATA OUTPUT FOR READER - LEFT TO RIGHT DIRECTION

39 DATA OUTPUT FOR READER - LEFT TO RIGHT DIRECTION

40 DATA OUTPUT FOR READER - LEFT TO RIGHT DIRECTION

41 DATA OUTPUT FOR READER - LEFT TO RIGHT DIRECTION

42 DATA OUTPUT FOR READER - LEFT TO RIGHT DIRECTION

43 DATA OUTPUT FOR READER - LEFT TO RIGHT DIRECTION

44 DATA OUTPUT FOR READER - LEFT TO RIGHT DIRECTION

45 DATA OUTPUT FOR READER - LEFT TO RIGHT DIRECTION

46 DATA OUTPUT FOR READER - LEFT TO RIGHT DIRECTION

47 DATA OUTPUT FOR READER - LEFT TO RIGHT DIRECTION

48 DATA OUTPUT FOR READER - LEFT TO RIGHT DIRECTION

49 DATA OUTPUT FOR READER - LEFT TO RIGHT DIRECTION

50 DATA OUTPUT FOR READER - LEFT TO RIGHT DIRECTION

51 DATA OUTPUT FOR READER - LEFT TO RIGHT DIRECTION

52 DATA OUTPUT FOR READER - LEFT TO RIGHT DIRECTION

53 DATA OUTPUT FOR READER - LEFT TO RIGHT DIRECTION

54 DATA OUTPUT FOR READER - LEFT TO RIGHT DIRECTION

55 DATA OUTPUT FOR READER - LEFT TO RIGHT DIRECTION

56 DATA OUTPUT FOR READER - LEFT TO RIGHT DIRECTION

57 DATA OUTPUT FOR READER - LEFT TO RIGHT DIRECTION

58 DATA OUTPUT FOR READER - LEFT TO RIGHT DIRECTION

59 DATA OUTPUT FOR READER - LEFT TO RIGHT DIRECTION

60 DATA OUTPUT FOR READER - LEFT TO RIGHT DIRECTION

61 DATA OUTPUT FOR READER - LEFT TO RIGHT DIRECTION

62 DATA OUTPUT FOR READER - LEFT TO RIGHT DIRECTION

63 DATA OUTPUT FOR READER - LEFT TO RIGHT DIRECTION

64 DATA OUTPUT FOR READER - LEFT TO RIGHT DIRECTION

65 DATA OUTPUT FOR READER - LEFT TO RIGHT DIRECTION

66 DATA OUTPUT FOR READER - LEFT TO RIGHT DIRECTION

67 DATA OUTPUT FOR READER - LEFT TO RIGHT DIRECTION

68 DATA OUTPUT FOR READER - LEFT TO RIGHT DIRECTION

69 DATA OUTPUT FOR READER - LEFT TO RIGHT DIRECTION

70 DATA OUTPUT FOR READER - LEFT TO RIGHT DIRECTION

71 DATA OUTPUT FOR READER - LEFT TO RIGHT DIRECTION

72 DATA OUTPUT FOR READER - LEFT TO RIGHT DIRECTION

73 DATA OUTPUT FOR READER - LEFT TO RIGHT DIRECTION

74 DATA OUTPUT FOR READER - LEFT TO RIGHT DIRECTION

75 DATA OUTPUT FOR READER - LEFT TO RIGHT DIRECTION

76 DATA OUTPUT FOR READER - LEFT TO RIGHT DIRECTION

77 DATA OUTPUT FOR READER - LEFT TO RIGHT DIRECTION

78 DATA OUTPUT FOR READER - LEFT TO RIGHT DIRECTION

79 DATA OUTPUT FOR READER - LEFT TO RIGHT DIRECTION

80 DATA OUTPUT FOR READER - LEFT TO RIGHT DIRECTION

81 DATA OUTPUT FOR READER - LEFT TO RIGHT DIRECTION

82 DATA OUTPUT FOR READER - LEFT TO RIGHT DIRECTION

83 DATA OUTPUT FOR READER - LEFT TO RIGHT DIRECTION

84 DATA OUTPUT FOR READER - LEFT TO RIGHT DIRECTION

85 DATA OUTPUT FOR READER - LEFT TO RIGHT DIRECTION

86 DATA OUTPUT FOR READER - LEFT TO RIGHT DIRECTION

87 DATA OUTPUT FOR READER - LEFT TO RIGHT DIRECTION

88 DATA OUTPUT FOR READER - LEFT TO RIGHT DIRECTION

89 DATA OUTPUT FOR READER - LEFT TO RIGHT DIRECTION

90 DATA OUTPUT FOR READER - LEFT TO RIGHT DIRECTION

91 DATA OUTPUT FOR READER - LEFT TO RIGHT DIRECTION

92 DATA OUTPUT FOR READER - LEFT TO RIGHT DIRECTION

93 DATA OUTPUT FOR READER - LEFT TO RIGHT DIRECTION

94 DATA OUTPUT FOR READER - LEFT TO RIGHT DIRECTION

95 DATA OUTPUT FOR READER - LEFT TO RIGHT DIRECTION

96 DATA OUTPUT FOR READER - LEFT TO RIGHT DIRECTION

97 DATA OUTPUT FOR READER - LEFT TO RIGHT DIRECTION

98 DATA OUTPUT FOR READER - LEFT TO RIGHT DIRECTION

99 DATA OUTPUT FOR READER - LEFT TO RIGHT DIRECTION

100 DATA OUTPUT FOR READER - LEFT TO RIGHT DIRECTION

www.TURNSTILES.us  
 8641 South Wrennank Rd.  
 Centennial, Colorado 80043  
 Patrick MacAllister  
 T881.303.6970-1099 ext. 11

**100TS - SCHEMATIC - KT100 #1**

SCALE: NONE

SHEET 1 OF 1

**TURNSTILE / CARD ACCESS**

**Sands Regency**  
 3445 N. Arlington Ave.  
 Reno, Nevada 89501